



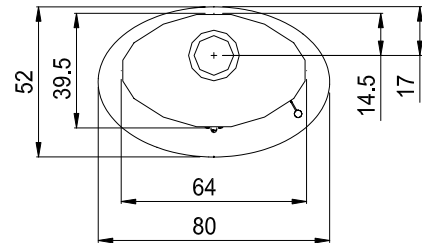
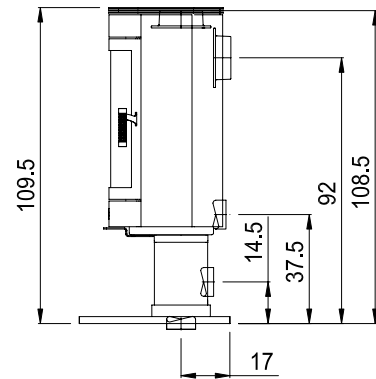
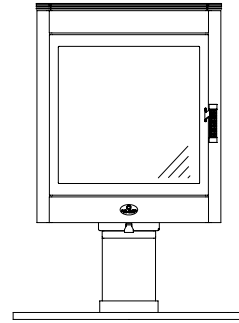
**MAX BLANK**  
HIGH QUALITY

# MEGA ELEGANCE - fixed

wood

## Technical specifications of the steel stove:

measurements (cm)	width	height	depth
stove	64	109,5 - 113	39,5
combustion chamber	44	38	23
fire glass	49	47,5	
fire door	55	55,5	
<b>flue pipe connection Ø 15 to → or ↑</b>			
height to mid pipe rear socket			92 / 92,5
height to pipe socket above			108,5 / 109
<b>outside air connection Ø 10 to → or ↓</b>			
height to mid connection horizontal in socket with / without glass floor cover			14,5 / 15
height to mid connection horizontal in socket base body with / without glass floor cover			37,5 / 38,5
depth to mid connection vertical with / without glass floor cover			17 / 22
<b>total weight</b>	<b>chamotte bricks</b>	<b>heat accumulator</b>	
148 - 160 kg	20 kg	-	
<b>data for</b>	<b>wood stove</b>		
nominal heat output	7,5 kW		
output range	7,5 - 4 kW		
efficiency	80%		
heating capability*	70 - 250 m <sup>3</sup>		
amount of fuel	2,5 kg / h		
fire duration	up to 4 h		
heat release	up to 5 h		
flue gas flow volume	7,7 g/s		
exhaust °C (nozzle)	300 °C		
min/max feed press.	12 / 15 Pa		
CO (13%/O <sub>2</sub> ) [mg/m <sup>3</sup> ]	1094,5		
CO (13%/O <sub>2</sub> ) [%]	0,088		
dust (13%/O <sub>2</sub> ) [mg/m <sup>3</sup> ]	30		
NOx (13%/O <sub>2</sub> ) [mg/m <sup>3</sup> ]	148		
wall distance, rear	14 cm		
wall distance, side	16 cm		
distance to the front	110 cm		



Fulfills the latest standards in burning wood and wood-briquettes  
(please see applicable standards).

**Please check the instruction manual for this wood burning stove.**

Suitable for multiple chimneys.

\* depending on stove location in the living area, room isolation,  
height of the room and amount of fuel

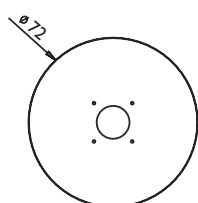
emission values at 75 cm flue pipe length

Subject to alterations; errors including printer's errors.

**Our specialised stove builders and retailers will  
assist you with practical advice.**

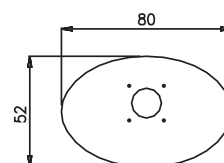
## Steel stove, model Mega Elegance

ENR	model	delivery time	
	<b>Mega Elegance - not rotatable</b>		
	<ul style="list-style-type: none"> <li>• stove body completely anthracite</li> <li>• oval steel base</li> </ul>		
201-2040	• with natural stone top cover in grey blasted ↑	4	
201-2049	• with natural stone top cover in grey blasted →	4	
201-2005	• with clear glass cover ↑	4	
	<b>Mega Elegance - not rotatable</b>		
	<ul style="list-style-type: none"> <li>• front stone grey</li> <li>• side panels brilliant-silver</li> <li>• oval steel pedestal</li> </ul>		
201-2001	• with natural stone top cover in grey blasted ↑	4	
201-2002	• with natural stone top cover in grey blasted →	4	
201-2003	• with clear glass cover ↑	4	
<b>accessories for the steel stove</b>			
	<u>floor covers made of glass, transparent</u>		
	(not factory-fitted, screws and gaskets are provided)		
308 191	glass base plate oval 80 x 52 x 1 cm, transparent (alternatively to the standard steel pedestal ovaly fitted for non-flammable floors only, especially for this stove type)		
308 193	glass base plate round Ø 72 x 1,2 cm, transparent (alternatively to the standard steel pedestal ovaly fitted for non-flammable floors only, especially for this stove type)		
29 201 311	<b>floor protector stainless steel (see accessories)</b>		
29 201 400	<b>floor protector glass (see accessories)</b> especially for this stove type		
	Outside air connection is prepared: <b>Be sure to specify when ordering:</b> <b>outside air connection horizontal or vertical</b> (is included in scope of delivery)		
	For other connection accessories, please see list of		
<b>special features of the steel stove, model Mega Elegance</b>			
	<ul style="list-style-type: none"> <li>• an Max Blank original</li> <li>• large curved fire window</li> <li>• large fire panorama through reduced stove design</li> <li>• always a cool door handle</li> <li>• adjustable feet for a stable set up</li> <li>• wide range of excellent floor protectors if circular for the centre of the room or with one cut side for ideal installation near the wall, or a small floor protector for not-flammable floors, or the standard base oval-steel, or in transparent oval-glass.</li> <li>• more special features and extras at the last pages</li> <li>• choose your stainless steel floor protector glass or stainless steel from the list of accessories,...easy to remove during summer times (for your model Mega Elegance with steel base)</li> </ul> <p style="text-align: center;"><b>Please also look up the features of the natural stone collection!</b></p>		



ENR 308 193

floor covers  
made of glass



ENR 308 191